

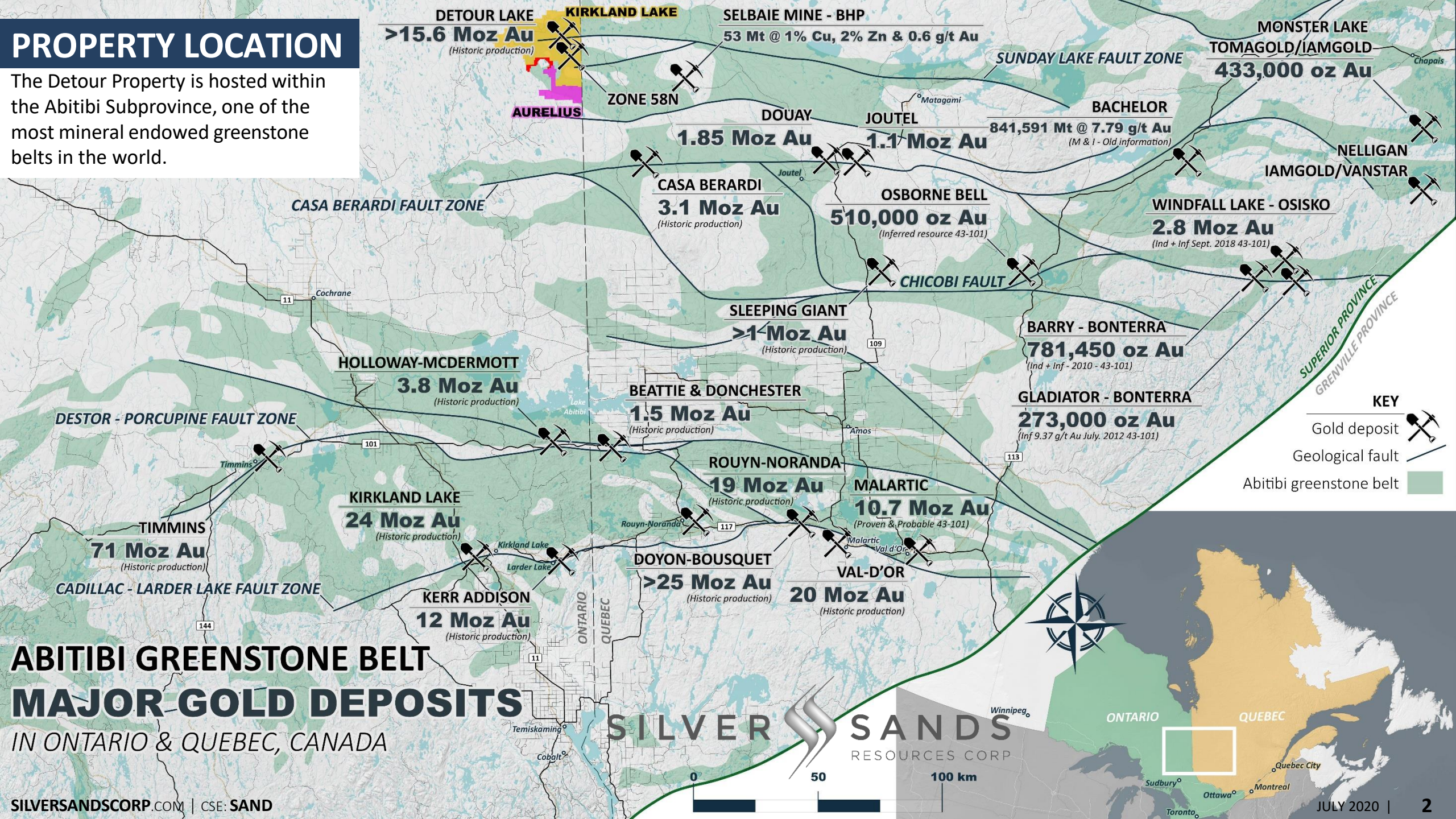


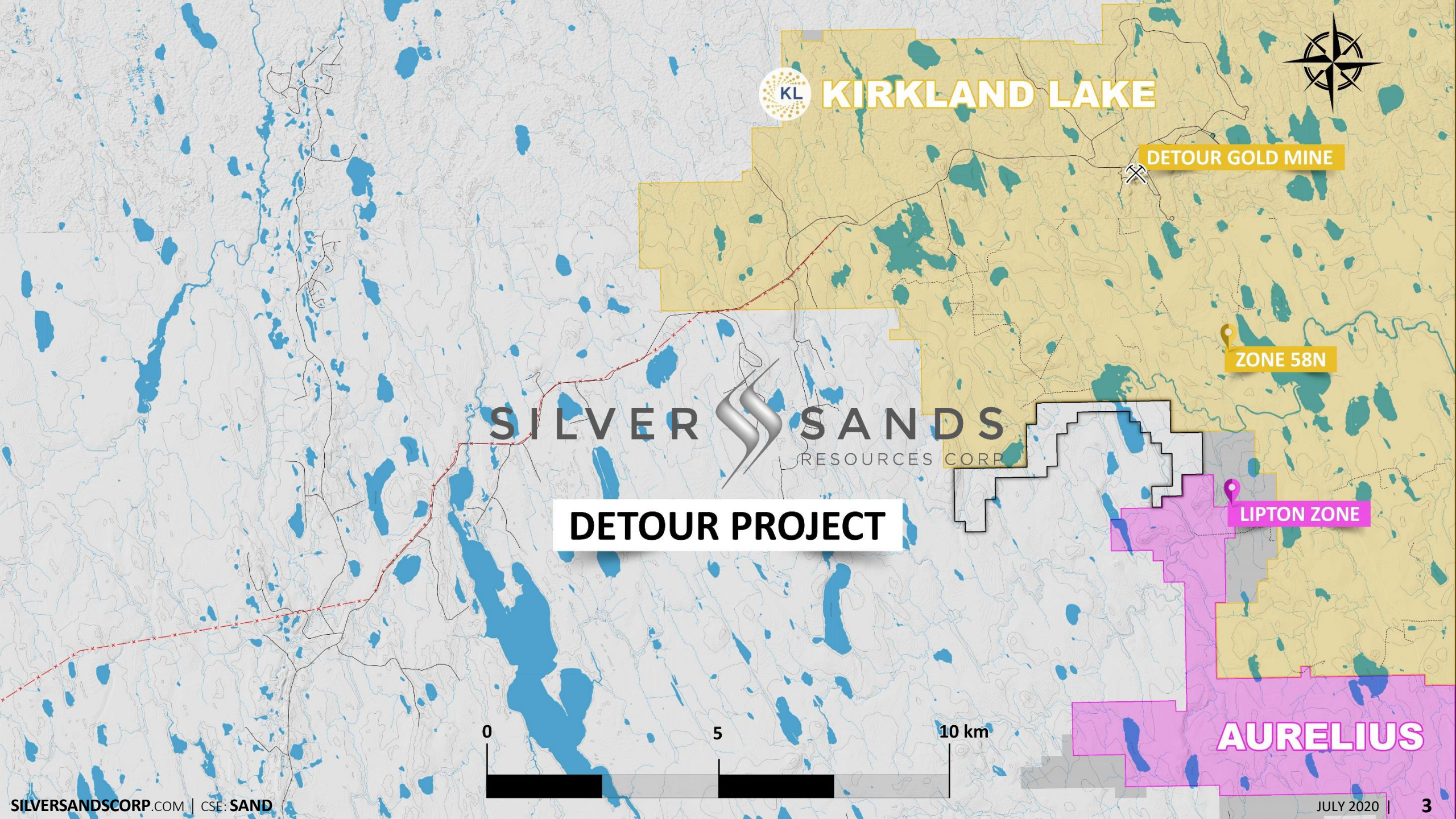
DETOUR PROPERTY

SAND:CSE

PROPERTY LOCATION

The Detour Property is hosted within the Abitibi Subprovince, one of the most mineral endowed greenstone belts in the world.





KIRKLAND LAKE

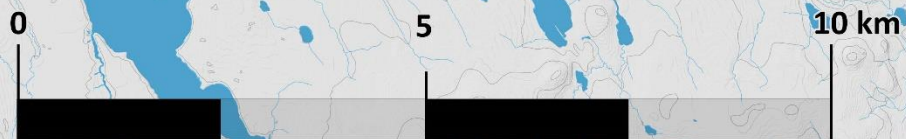
DETOUR GOLD MINE

ZONE 58N

LIPTON ZONE

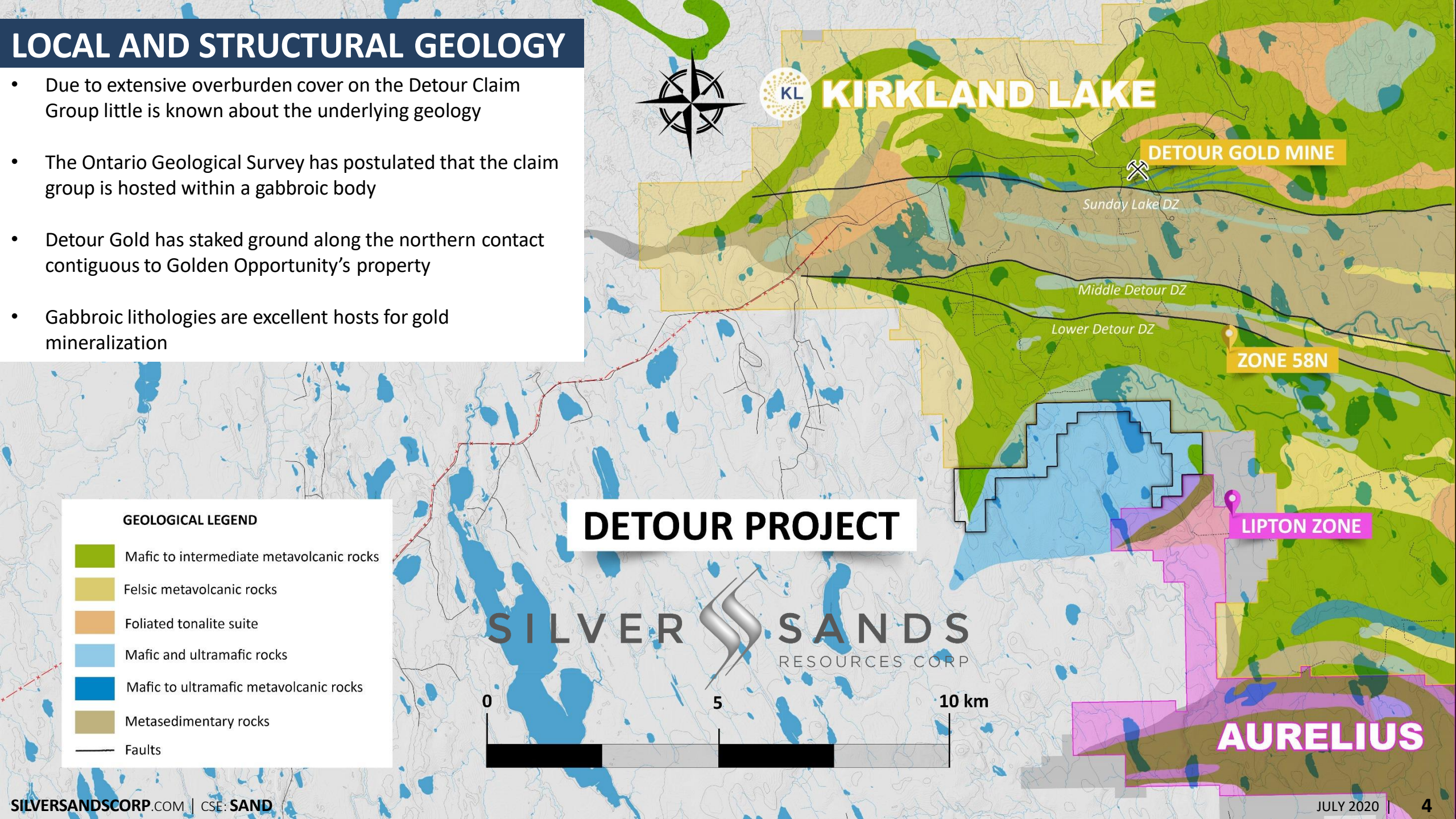
AURELIUS

DETOUR PROJECT

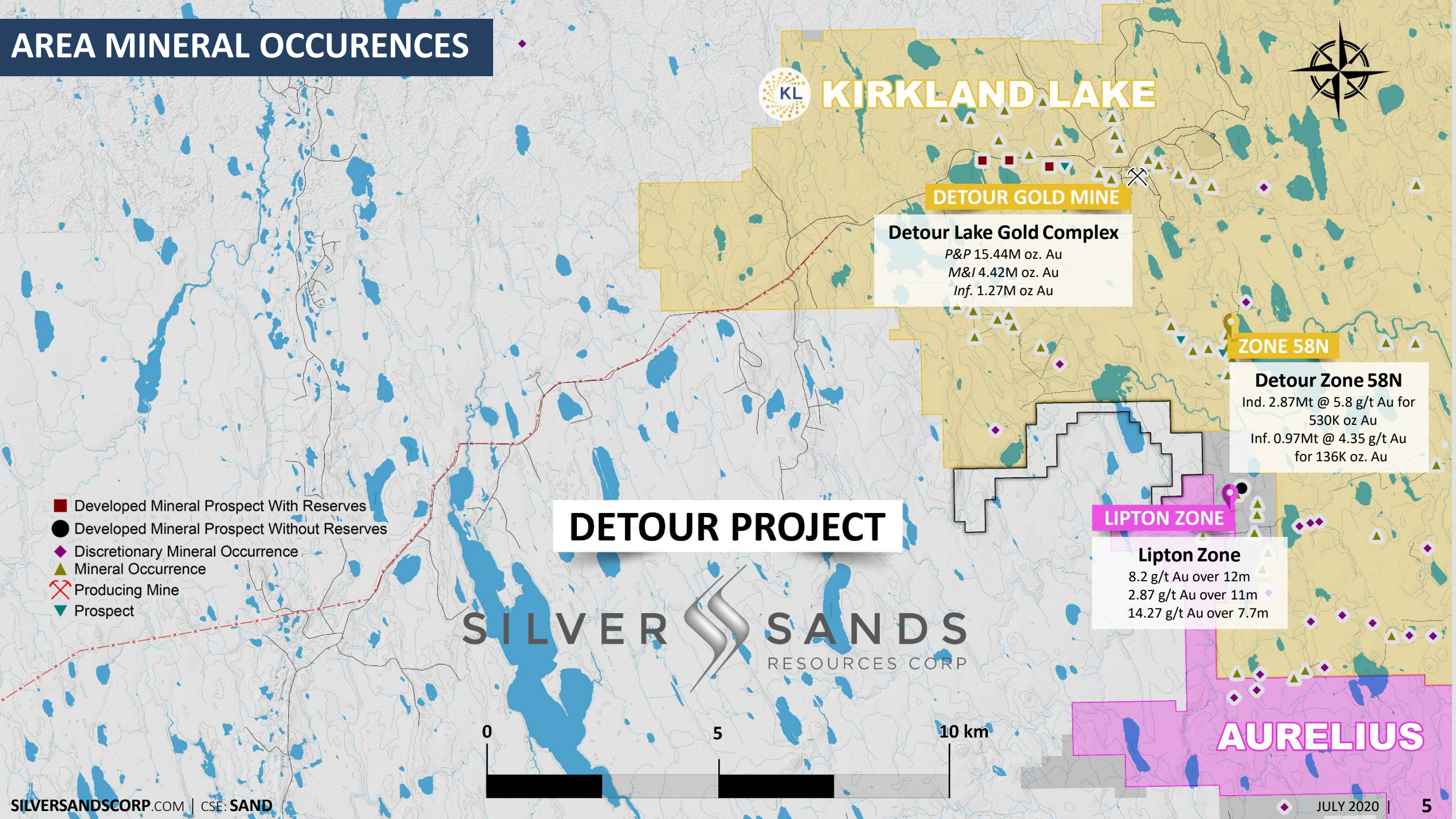


LOCAL AND STRUCTURAL GEOLOGY

- Due to extensive overburden cover on the Detour Claim Group little is known about the underlying geology
- The Ontario Geological Survey has postulated that the claim group is hosted within a gabbroic body
- Detour Gold has staked ground along the northern contact contiguous to Golden Opportunity's property
- Gabbroic lithologies are excellent hosts for gold mineralization

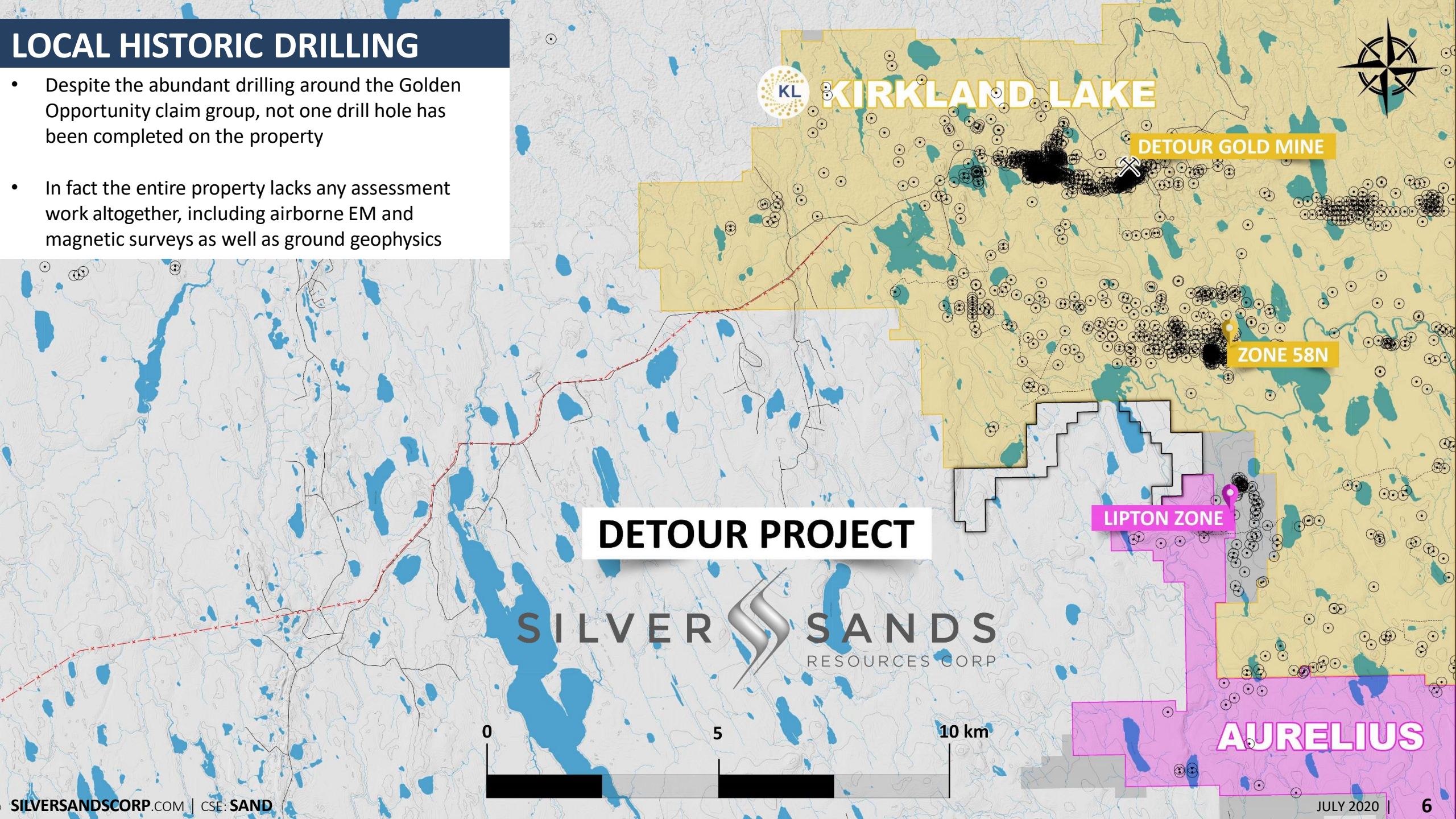


AREA MINERAL OCCURENCES



LOCAL HISTORIC DRILLING

- Despite the abundant drilling around the Golden Opportunity claim group, not one drill hole has been completed on the property
- In fact the entire property lacks any assessment work altogether, including airborne EM and magnetic surveys as well as ground geophysics



DETOUR PROJECT

SILVER SANDS
RESOURCES CORP.

LIPTON ZONE

AURELIUS



LOCAL AND STRUCTURAL GEOLOGY

KIRKLAND LAKE



DETOUR GOLD MINE

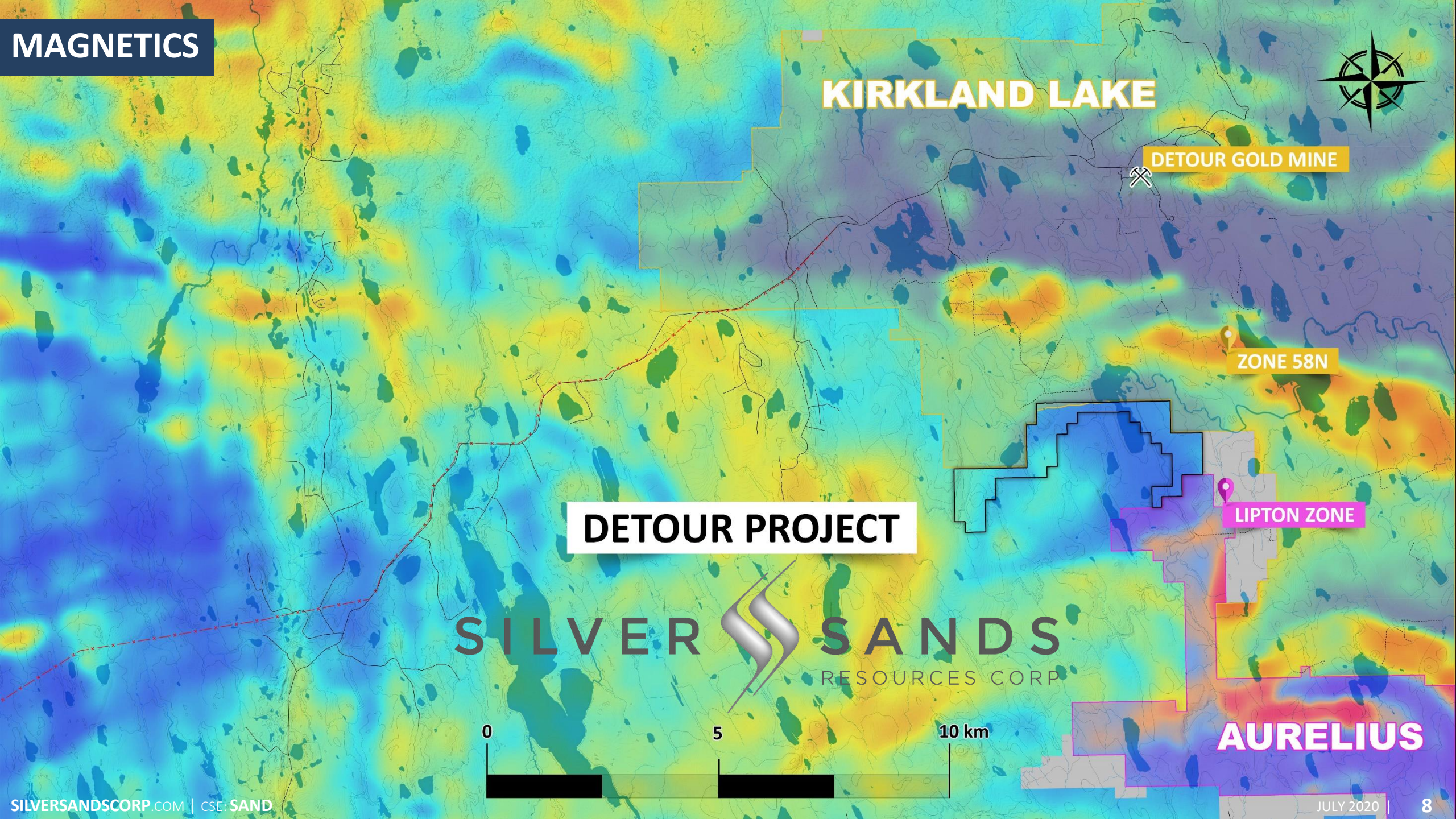
ZONE 58N

DETOUR PROJECT

LIPTON ZONE



AURELIUS



KIRKLAND LAKE

DETOUR GOLD MINE

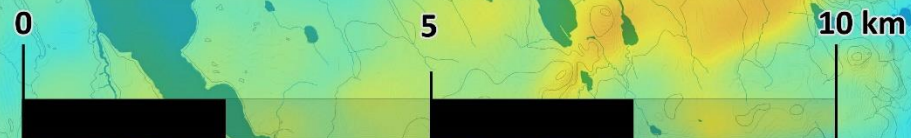
ZONE 58N

DETOUR PROJECT

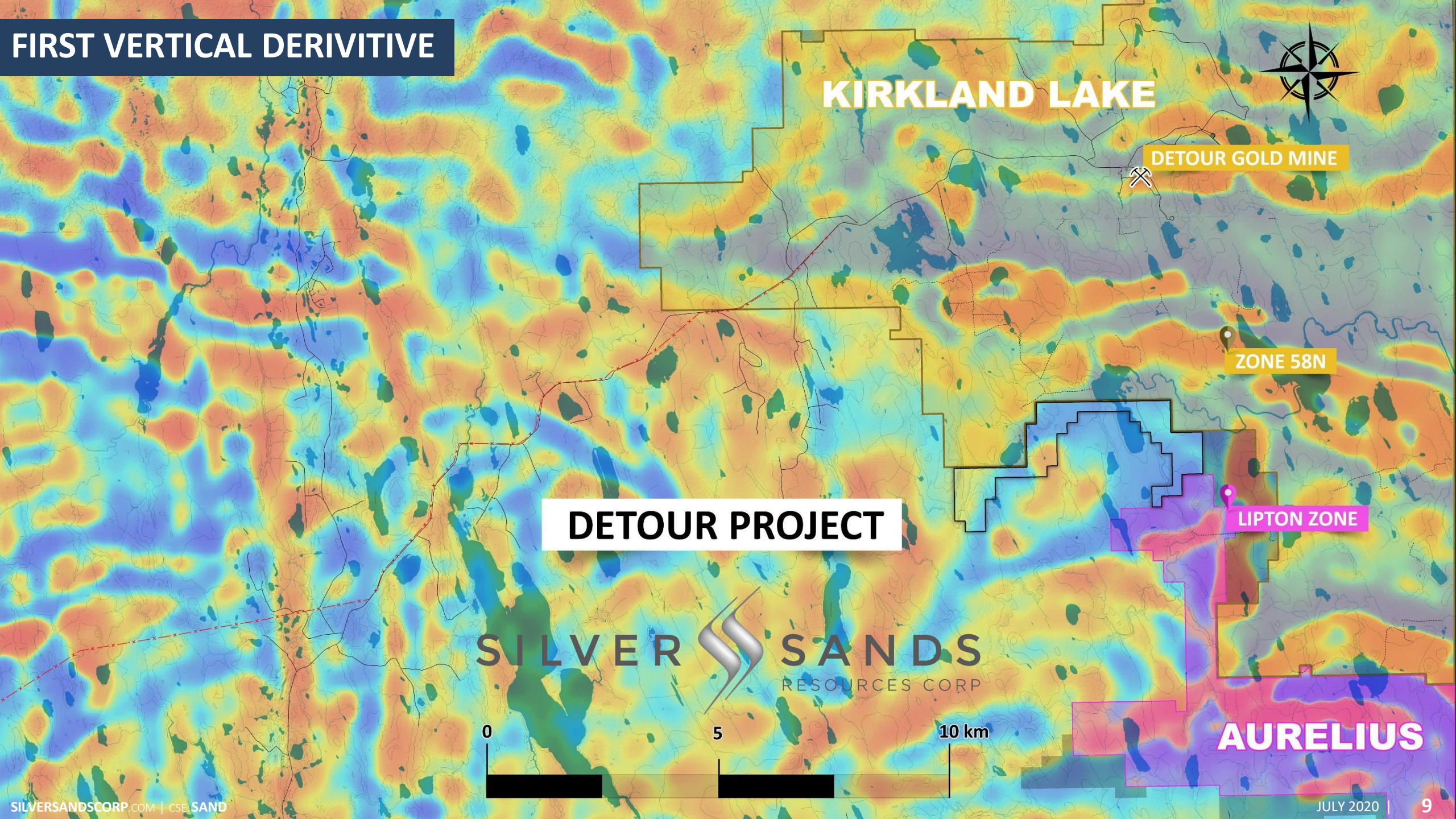
LIPTON ZONE

SILVER SANDS
RESOURCES CORP

AURELIUS



FIRST VERTICAL DERIVATIVE



KIRKLAND LAKE

DETOUR GOLD MINE

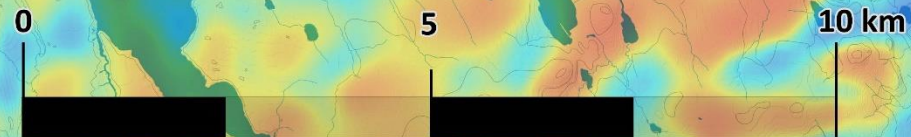
ZONE 58N

DETOUR PROJECT

LIPTON ZONE

SILVER SANDS
RESOURCES CORP

AURELIUS



KIRKLAND LAKE



DETOUR PROJECT

1,662 ha



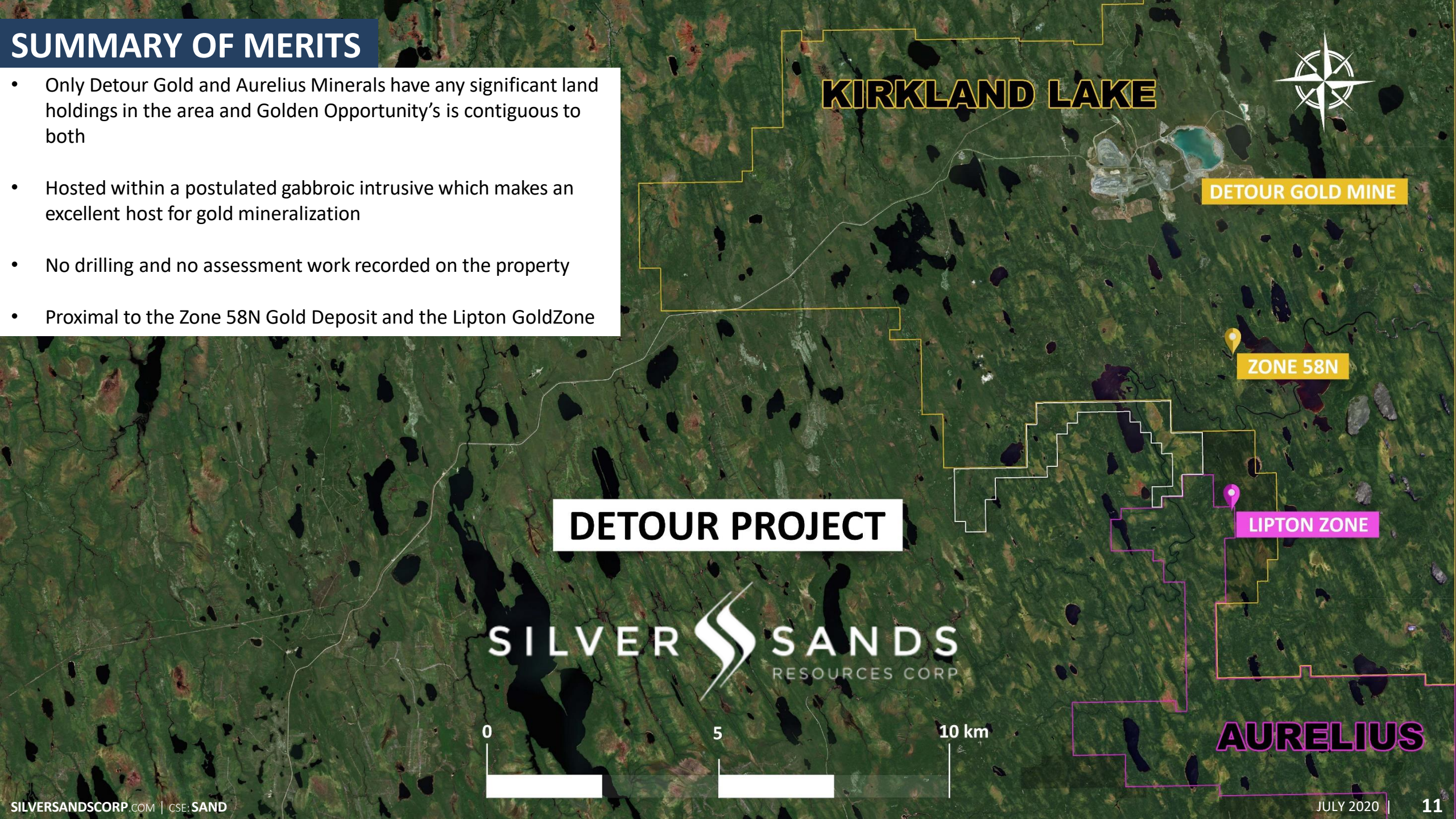
LIPTON ZONE

AURELIUS



SUMMARY OF MERITS

- Only Detour Gold and Aurelius Minerals have any significant land holdings in the area and Golden Opportunity's is contiguous to both
- Hosted within a postulated gabbroic intrusive which makes an excellent host for gold mineralization
- No drilling and no assessment work recorded on the property
- Proximal to the Zone 58N Gold Deposit and the Lipton GoldZone





Contact Us:

Keith Anderson
1 604 786 7774

keith.silversandscorp@gmail.com